


















# ENLACES TIPO UMT

**en acero zincado o en inox**

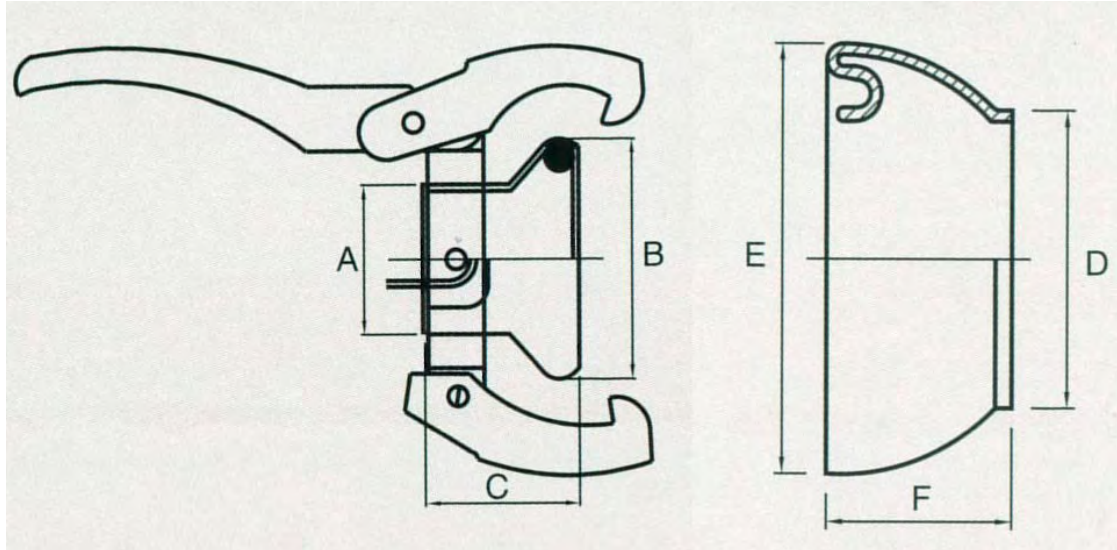


- Fabricados en chapa con tratamiento de Zincado o en acero INOX.
- Indicados para cualquier instalación de transporte de agua y líquidos con una presión no superior a 8 BAR.
- Podemos fabricar rápidamente cualquier medida y combinación que precise el cliente, aunque no esté indicado en este catálogo.

# ÍNDICE ENLACES UMT

FIGURA	Pag.	FIGURA	Pag.		
	Fig. 111 Hembra para soldar UMT	38		Fig. 141 Tapón Hembra UMT	41
	Fig. 113 Junta UMT	38		Fig. 142 Tapón Macho UMT	42
	Fig. 115 Macho para soldar UTM	38		Fig. 143 Macho-Hembra codo 90° UMT	43
	Fig. 117 Hembra Mang. codo 90° UMT	42		Fig. 145 Macho Brida PN-10 UMT	43
	Fig. 121 Hembra Manguera UMT	40		Fig. 190 Esparcidor Hembra Fig.	44
	Fig. 122 Hembra Rosca UMT	40		Fig. 191 Esparcidor codo Hembra	44
	Fig. 123 Aro UMT	39		Fig. 192 Esparcidor codo Macho	44
	Fig. 125 Macho Rosca UMT	39		Fig. 193 Esparcidor Macho	44
	Fig. 127 Macho Manguera UMT	41			

# MEDIDAS UMT EN ACERO ZINCADO



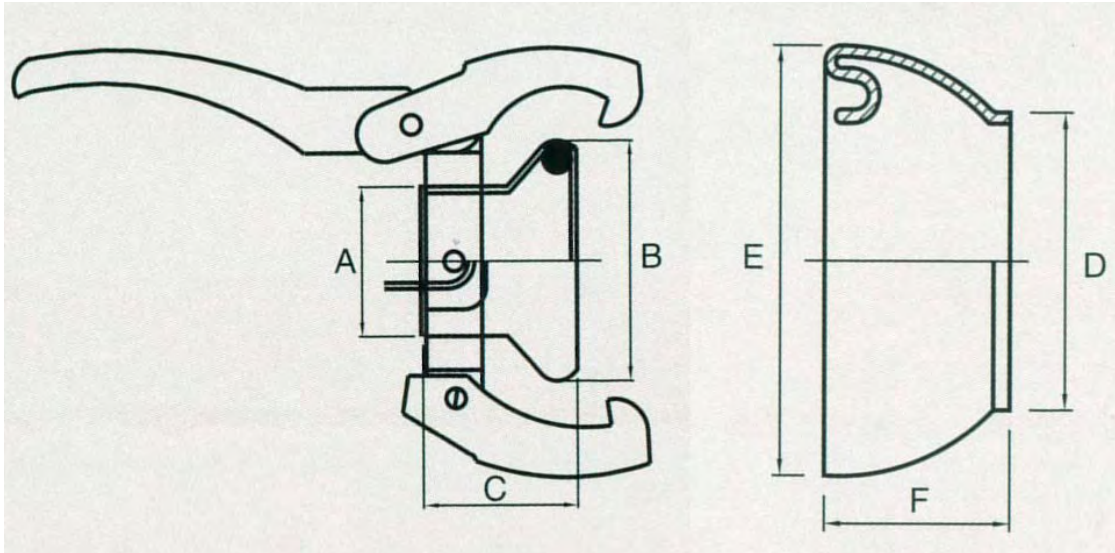
UMT	
MEDIDA	
HEMBRA	A
	B
	C

50	70	89	108	133	159
50/60	60/70	80/90	100/110	120/125	150/160
54	74	93	113	139	166
85	106	136	161	189	222
48	49	67	85	95	85

UMT	
MEDIDA	
MACHO	D
	E
	F

50	70	89	108	133	159
1 1/2" - 2"	2" - 2 1/2"	3"	4"	5"	6"
54	74	93	113	139	166
77	105	134	155	179	210
32	43	46	49	55	60

# MEDIDAS UMT EN ACERO INOXIDABLE



UMT	
MEDIDA	
HEMBRA	A
	B
	C

50	70	89	108	133	159
50/60	60/70	80/90	100/110	120/125	150/160
53	74	93	113	138	164
85	106	136	161	189	222
55	59	65	84	83	84

UMT	
MEDIDA	
MACHO	D
	E
	F

50	70	89	108	133	159
1 1/2" - 2"	2" - 2 1/2"	3"	4"	5"	6"
53	74	93	113	138	164
78	105	134	158	180	210
34	40	46	47	49	58



**FIG. 115**

**MACHO PARA SOLDAR - UMT**

UMT	ROSCA
50	1 1/2" - 2"
70	2" - 2 1/2"
89	3"
108	4"
133	5"
159	6"

ACERO ZINCADO	
Cod.	P.V.P.
1110.021	<b>2,44 €</b>
1110.022	<b>7,97 €</b>
1110.023	<b>4,96 €</b>
1110.024	<b>5,04 €</b>
1110.025	<b>6,40 €</b>
1110.026	<b>10,57 €</b>

INOX 304	
Cod.	P.V.P.
1910.021	<b>15,40 €</b>
1910.022	<b>24,77 €</b>
1910.023	<b>31,31 €</b>
1910.024	<b>41,11 €</b>
1910.025	<b>46,27 €</b>
1910.026	<b>56,54 €</b>



**FIG. 111**

**HEMBRA PARA SOLDAR - UMT**

UMT	Ø MANGUERA
50	50 - 60
70	60 - 70
89	80 - 90
108	100 - 110
133	120 - 125
159	150 - 160

ACERO ZINCADO	
Cod.	P.V.P.
1110.001	<b>12,23 €</b>
1110.002	<b>18,33 €</b>
1110.003	<b>20,48 €</b>
1110.004	<b>28,04 €</b>
1110.005	<b>41,81 €</b>
1110.006	<b>47,08 €</b>

INOX 304	
Cod.	P.V.P.
1910.001	<b>39,25 €</b>
1910.002	<b>55,13 €</b>
1910.003	<b>68,22 €</b>
1910.004	<b>84,10 €</b>
1910.005	<b>107,94 €</b>
1910.006	<b>144,37 €</b>



**FIG. 113**

**JUNTA - UMT**

UMT	MEDIDAS		
	GROSOR	Ø INT.	Ø EXT.
50	11	63	85
70	13	77	103
89	14	109	137
108	18	124	160
133	22	146	190
159	20,5	176	217

ACERO ZINCADO	
Cod.	P.V.P.
1110.011	<b>1,21 €</b>
1110.012	<b>1,62 €</b>
1110.013	<b>1,89 €</b>
1110.014	<b>2,30 €</b>
1110.015	<b>3,01 €</b>
1110.016	<b>4,12 €</b>



**FIG. 123**

**ARO CON ANILLAS - UMT**

UMT	Ø MANGUERA
50	50 - 60
70	60 - 70
89	80 - 90
108	100 - 110
133	120 - 125
159	150 - 160

ACERO ZINCADO	
Cod.	P.V.P.
1110.081	<b>9,62 €</b>
1110.082	<b>12,15 €</b>
1110.083	<b>15,32 €</b>
1110.084	<b>21,72 €</b>
1110.085	<b>29,05 €</b>
1110.086	<b>32,59 €</b>



**FIG. 125**

**MACHO ROSCA - UMT**

UMT	ROSCA
50	1 1/2"
	2"
70	2"
	2 1/2"
89	3"
108	3 1/2"
	4"
133	4 1/2"
	5"
159	6"

ACERO ZINCADO	
Cod.	P.V.P.
1110.093	<b>7,98 €</b>
1110.847	<b>9,16 €</b>
1110.094	<b>14,21 €</b>
1110.095	<b>14,39 €</b>
1110.096	<b>16,44 €</b>
1110.097	<b>20,07 €</b>
1110.098	<b>20,77 €</b>
1110.101	<b>26,01 €</b>
1110.099	<b>26,01 €</b>
1110.100	<b>38,82 €</b>

INOX 304	
Cod.	P.V.P.
1910.093	<b>39,25 €</b>
1910.847	<b>39,25 €</b>
1910.094	<b>52,80 €</b>
1910.095	<b>52,80 €</b>
1910.096	<b>62,53 €</b>
1910.097	<b>85,45 €</b>
1910.098	<b>85,45 €</b>
1910.101	<b>106,35 €</b>
1910.099	<b>106,35 €</b>
1910.100	<b>124,87 €</b>





**FIG. 122**

**HEMBRA ROSCA - UMT**

UMT	ROSCA
50	1 1/2"
	2"
70	2"
	2 1/2"
89	3"
108	3 1/2"
	4"
133	4 1/2"
	5"
159	6"

ACERO ZINCADO		INOX 304	
Cod.	P.V.P.	Cod.	P.V.P.
1110.657	17,84 €	1910.657	94,50 €
1110.850	19,96 €	1910.850	94,50 €
1110.658	28,45 €	1910.658	82,22 €
1110.659	29,49 €	1910.659	82,22 €
1110.660	34,72 €	1910.660	101,55 €
1110.661	44,99 €	1910.661	123,71 €
1110.662	46,60 €	1910.662	123,71 €
1110.665	71,81 €	1910.665	147,80 €
1110.663	71,81 €	1910.663	147,80 €
1110.664	76,59 €	1910.664	193,12 €



**FIG. 121**

**HEMBRA MANGUERA - UMT**

UMT	Ø MANGUERA
50	50
	60
70	60
	70
89	80
	90
108	100
	110
133	120
	125
159	150

ACERO ZINCADO	
Cod.	P.V.P.
1110.065	17,30 €
1110.840	19,48 €
1110.066	26,74 €
1110.067	26,74 €
1110.069	31,95 €
1110.070	31,95 €
1110.071	42,48 €
1110.072	43,15 €
1110.073	60,25 €
1110.074	60,25 €
1110.076	75,96 €

INOX 304	
Cod.	P.V.P.
1910.065	57,94 €
1910.840	57,94 €
1910.066	71,54 €
1910.067	74,76 €
1910.069	94,85 €
1910.070	96,72 €
1910.071	115,88 €
1910.072	120,51 €
1910.073	141,03 €
1910.074	141,03 €
1910.076	185,48 €



**FIG. 127**

**MACHO MANGUERA - UMT**

UMT	Ø MANGUERA
50	50
	60
70	60
	70
89	80
	90
108	100
	110
133	120
	125
159	150

ACERO ZINCADO	
Cod.	P.V.P.
1110.145	<b>8,50 €</b>
1110.844	<b>8,50 €</b>
1110.146	<b>14,64 €</b>
1110.147	<b>14,64 €</b>
1110.149	<b>16,72 €</b>
1110.150	<b>16,72 €</b>
1110.151	<b>20,24 €</b>
1110.152	<b>21,41 €</b>
1110.153	<b>32,56 €</b>
1110.154	<b>32,56 €</b>
1110.156	<b>45,45 €</b>

INOX 304	
Cod.	P.V.P.
1910.145	<b>35,04 €</b>
1910.844	<b>35,04 €</b>
1910.146	<b>41,59 €</b>
1910.147	<b>45,33 €</b>
1910.149	<b>55,89 €</b>
1910.150	<b>56,56 €</b>
1910.151	<b>79,90 €</b>
1910.152	<b>81,76 €</b>
1910.153	<b>100,43 €</b>
1910.154	<b>100,43 €</b>
1910.156	<b>117,286 €</b>



**FIG. 141**

**TAPON HEMBRA - UMT**

UMT
50
70
89
108
133
159

ACERO ZINCADO	
Cod.	P.V.P.
1110.481	<b>14,16 €</b>
1110.482	<b>22,74 €</b>
1110.483	<b>27,24 €</b>
1110.484	<b>35,19 €</b>
1110.485	<b>45,86 €</b>
1110.486	<b>68,65 €</b>

INOX 304	
Cod.	P.V.P.
1910.481	<b>39,25 €</b>
1910.482	<b>55,12 €</b>
1910.483	<b>68,22 €</b>
1910.484	<b>84,10 €</b>
1910.485	<b>107,93 €</b>
1910.486	<b>144,37 €</b>





**FIG. 142**

**TAPON MACHO - UMT**

UMT
50
70
89
108
133
159

ACERO ZINCADO	
Cod.	P.V.P.
1110.491	<b>5,65 €</b>
1110.492	<b>8,23 €</b>
1110.493	<b>8,77 €</b>
1110.494	<b>10,66 €</b>
1110.495	<b>12,86 €</b>
1110.496	<b>17,30 €</b>

INOX 304	
Cod.	P.V.P.
1910.491	<b>28,95 €</b>
1910.492	<b>39,25 €</b>
1910.493	<b>46,71 €</b>
1910.494	<b>57,45 €</b>
1910.495	<b>64,02 €</b>
1910.496	<b>75,23 €</b>



**FIG. 117**

**HEMBRA MANGUERA CODO 90° - UMT**

UMT	Ø MANGUERA
50	50
	60
70	60
	70
89	80
	90
108	100
	110
133	120
	125
159	150

ACERO ZINCADO	
Cod.	P.V.P.
1110.045	<b>24,35 €</b>
1110.843	<b>26,71 €</b>
1110.046	<b>36,49 €</b>
1110.047	<b>36,49 €</b>
1110.049	<b>44,35 €</b>
1110.050	<b>44,35 €</b>
1110.051	<b>62,83 €</b>
1110.052	<b>62,83 €</b>
1110.053	<b>92,55 €</b>
1110.054	<b>92,55 €</b>
1110.056	<b>146,06 €</b>

INOX 304	
Cod.	P.V.P.
1910.045	<b>102,87 €</b>
1910.843	<b>102,87 €</b>
1910.046	<b>136,01 €</b>
1910.047	<b>136,01 €</b>
1910.049	<b>149,78 €</b>
1910.050	<b>149,78 €</b>
1910.051	<b>221,77 €</b>
1910.052	<b>221,77 €</b>
1910.053	<b>259,20 €</b>
1910.054	<b>259,20 €</b>
1910.056	<b>329,04 €</b>



**FIG. 143**

**MACHO - HEMBRA CODO 90° - UMT**

UMT
50
70
89
108
133
159

ACERO ZINCADO	
Cod.	P.V.P.
1110.505	<b>31,88 €</b>
1110.506	<b>49,43 €</b>
1110.509	<b>55,45 €</b>
1110.511	<b>73,77 €</b>
1110.513	<b>101,44 €</b>
1110.515	<b>123,23 €</b>

INOX 304	
Cod.	P.V.P.
1910.505	<b>114,74 €</b>
1910.506	<b>146,76 €</b>
1910.509	<b>174,21 €</b>
1910.511	<b>243,98 €</b>
1910.513	<b>288,74 €</b>
1910.515	<b>368,60 €</b>



**FIG. 145**

**MACHO BRIDA PN-10 - UMT**

BRIDA DN	UMT
DN-50	50
DN-65	70
DN-80	89
DN-100	108
DN-125	133
DN-150	159

ACERO ZINCADO	
Cod.	P.V.P.
1110.715	<b>23,99 €</b>
1110.727	<b>29,33 €</b>
1110.730	<b>33,72 €</b>
1110.750	<b>44,63 €</b>
1110.765	<b>52,19 €</b>
1110.780	<b>78,23 €</b>

INOX 304	
Cod.	P.V.P.
1910.715	<b>102,44 €</b>
1910.727	<b>122,65 €</b>
1910.730	<b>159,08 €</b>
1910.750	<b>229,37 €</b>
1910.765	<b>266,52 €</b>
1910.780	<b>315,14 €</b>



**FIG. 190**

**ESPARCIDOR HEMBRA - UMT**

UMT	ACERO ZINCADO	
	Cod.	P.V.P.
89	1111.191	64,53 €
108	1111.192	66,82 €
133	1111.193	85,40 €
159	1111.194	97,27 €



**FIG. 193**

**ESPARCIDOR MACHO - UMT**

UMT	ACERO ZINCADO	
	Cod.	P.V.P.
89	1111.196	46,82 €
108	1111.197	48,32 €
133	1111.198	56,62 €
159	1111.199	65,88 €



**FIG. 191**

**ESPARCIDOR CODO 90° HEMBRA - UMT**

UMT	ACERO ZINCADO	
	Cod.	P.V.P.
89	1111.204	84,63 €
108	1111.205	86,84 €
133	1111.206	107,91 €
159	1111.207	141,96 €



**FIG. 192**

**ESPARCIDOR CODO 90° MACHO - UMT**

UMT	ACERO ZINCADO	
	Cod.	P.V.P.
89	1111.214	56,84 €
108	1111.215	58,49 €
133	1111.216	69,48 €
159	1111.217	92,88 €